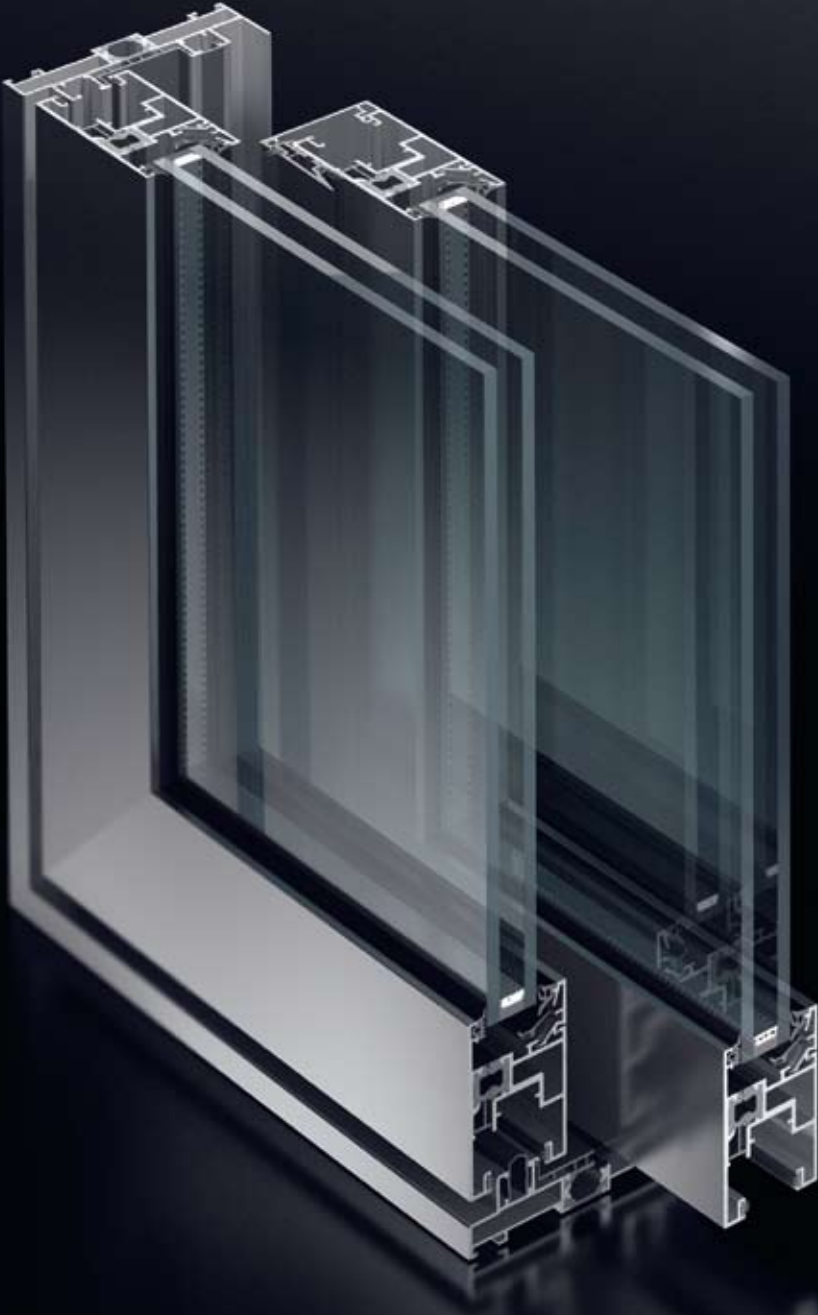
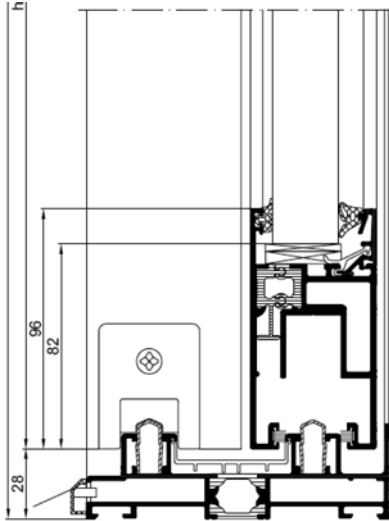


# Schüco Sliding Door ASS 50



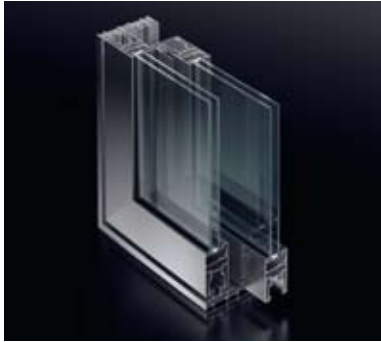


Section detail Schüco Sliding Door ASS 50  
Scale 2:1

## Schüco Sliding Door ASS 50

Thermally insulated sliding and slide-and-lift system with maximum door variety and solid leaf frame with minimal face widths.

- Thermal insulation in accordance with DIN EN ISO 10077, Part 1,  $U_d$  value of  $1.87 \text{ W/m}^2\text{K}$ , unit height of  $2700 \text{ mm} \times 2700 \text{ mm}$
- Max. leaf weight 300 kg
- Maximum door leaf sizes:  $3000 \text{ mm}$  wide and  $3000 \text{ mm}$  high
- Schüco e-slide concealed mechatronic drive/fittings system can be integrated if required
- Continuous gaskets for increased noise reduction
- Solid leaf frame with minimal face width



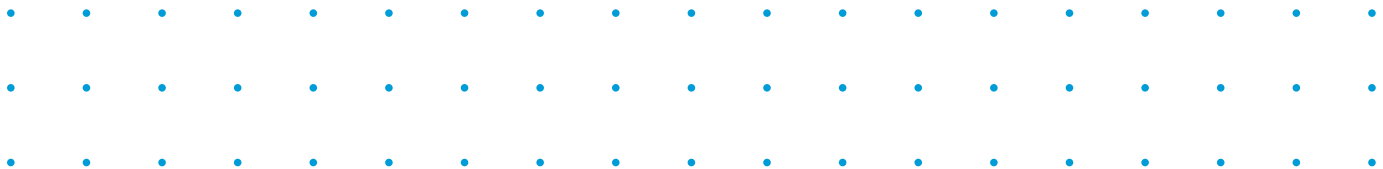
Schüco ASS 50.NI

## Schüco Sliding Door ASS 50.NI

Non-insulated sliding and slide-and-lift system with narrow face widths for large glazing units.

- Burglar resistance up to EF1/WK2
- Leaf weights up to 150 kg  
Glazing thicknesses of 8 - 32 mm
- Double track design
- Smooth, quiet operation of sliding units
- Efficient installation due to optimised glazing beads, glass supports and glass packing

Schüco International KG  
[www.schueco.com](http://www.schueco.com)



Excellent Aluminium Systems  
Sales Manager: Ole Ohm  
Tel: 021 424 3070 · Fax: 021 424 3070 · Cell: 083 266 3120  
Email: [ole@excellentaluminium.co.za](mailto:ole@excellentaluminium.co.za)  
Address: 43 Bellevue Road  
Higgovale, Cape Town 8001